

2018 Funders Forum Update



Our Mission

Provide a comprehensive, integrated system of care which supports and connects individuals with special needs and disabilities and their families to community-based services and opportunities.



Palm Beach County



Call to Action

- 16.4% of residents in Palm Beach County have one or more special needs or disability (Florida Department of Health, 2013)
 - Rates of disability increase with age
- 1 of every 6 children are being diagnosed with a developmental or learning disorder (Center for Disease Control, 2018)
- There is a significant shortage of service providers (Community Needs Assessment, 2015)
- Limited to no supports or services after 22 years of age
- 64% unemployment rate (Disability Statistics Annual Report, 2017)
- Few supportive housing options



Palm Beach County



SNAC Objectives

- Coordinate functions and services across agencies, integrate funding streams and support professional development
- Establish an efficient and effective Information & Referral System
- Improve timely access to screening, assessment and diagnosis and increase access to care
- Increase respite services
- Improve transition practices, including advocacy and futures planning
- Increase employment services
- Develop a plan to increase community based housing options



Palm Beach County



Our Approach

- Create new connections
- Strengthen leadership and alliances
- Share resources
- Maximize effective use of community resources
- Identify strategies for improving quality of life
- Engage in collaborative action planning to solve problems
 - Use shared language and shared outcomes



Palm Beach County

Birth to 22 Steps to Success

Steps to Success

The Steps to Success represent 6 domains of child and youth development – physical health, behavioral health, academic readiness, social/emotional well-being, career readiness and connection and contribution to community and society. These steps represent key markers of success that allows us to access developmental outcomes. As children and youth make their way up these stairs, we are able to track their progress or lack thereof. The indicators, or measures, for these different areas are shown above the stair steps in the green text (for things we are trying to promote) and orange text (for things we are trying to prevent). Understanding what this data looks like for different subpopulations within Palm Beach County is also essential. In order to achieve those outcomes, children and youth need key supports along the way, through a combination of effective parenting and safe and nurturing families and communities. A sample of possible measures are listed below.

Steps to Success & Supports for Success

STEPS TO SUCCESS: Child & Youth Outcomes & Indicators



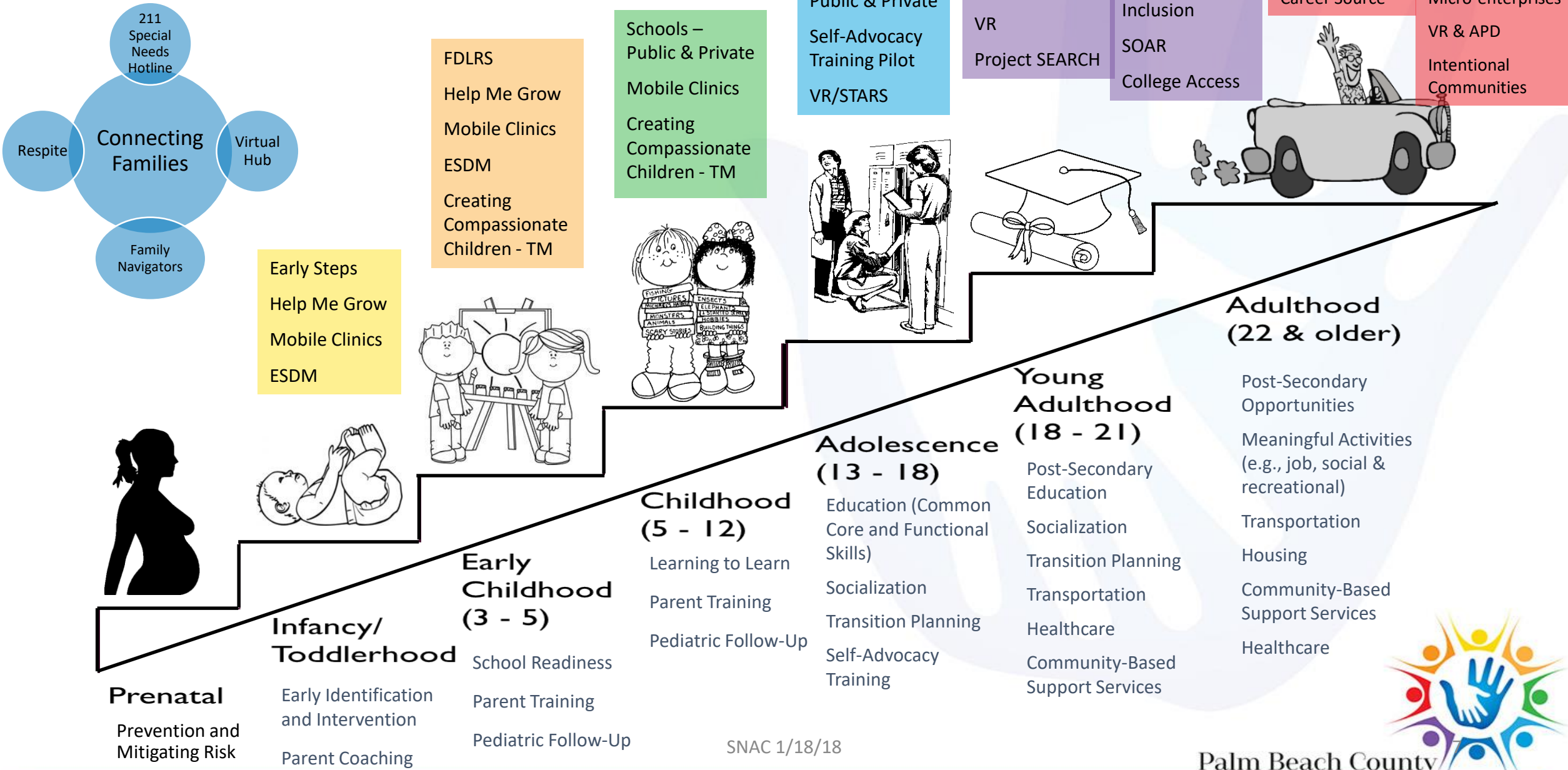
SUPPORTS FOR SUCCESS: Effective Parenting | Safe & Nurturing Families & Communities

- ECONOMIC ACCESS:** Percentage of Families in Poverty • Access to Housing • Workforce and Job Development Opportunities • Number and Percentage of Households receiving Food Stamps • Access to Transportation
- PARENTING & ROLE MODELS:** Parenting stress (situational are chronic) • Knowledge of Parenting and Child Development • Support Services for Parents
- SOCIAL & EMOTIONAL SUPPORTS:** Access to Afterschool Services • Access to Early Childhood Education and Care • Mental Health Assessments & Services • Caregiver Stability • Bullying
- EDUCATIONAL SUPPORTS:** Educational Attainment • Advancement via Individual Determination • Parent Education & Involvement • Healthy School Connections • Effective Schools
- HEALTH & WELLNESS SUPPORTS:** Access to Health Insurance • Food Deserts • Physical/Eye/Hearing Exams • Late or No Prenatal Care • Access to Safe and Clean Parks and Recreation Spaces
- REMOVAL OF COMMUNITY STRESSORS & SYSTEMIC BARRIERS:** Crime Reduction • Access to Domestic Violence Services

KEY: + Child & Youth Indicator (Promotion) - Child & Youth Indicator (Prevention) Blue = Family, School or Community Supports Bold = measures & data currently available Italics = measures and/or data TBD

SNAC 1/18/18

Steps to Success





Composition & Structure

- 375 individuals representing over 160 organizations
- Executive Steering Committee
- 6 Taskforces
 - Early Childhood
 - Post-Secondary
 - Housing
 - Employment
 - Transitions, Advocacy & Future Planning
 - Family Navigating
 - Virtual Hub
 - Health/Healthcare Access (FL-HATS)



Palm Beach County

Special Needs Advisory Coalition



Impact

- 2 Job Fairs resulting in 15 young adults finding employment
- 7 Project SEARCH pre-employment training internships are confirmed
- Hosted a Supportive Housing Solutions Summit with proclamation from BCC
- Self-Advocacy Curriculum developed and piloted at several private/charter schools
- REST respite train the trainer course completed with scholarships provided to 13 trainers who will train 260 companions this year
 - 2 trainers selected to become Master Trainers
- Active Facebook Page and weekly e-newsletter





On the horizon

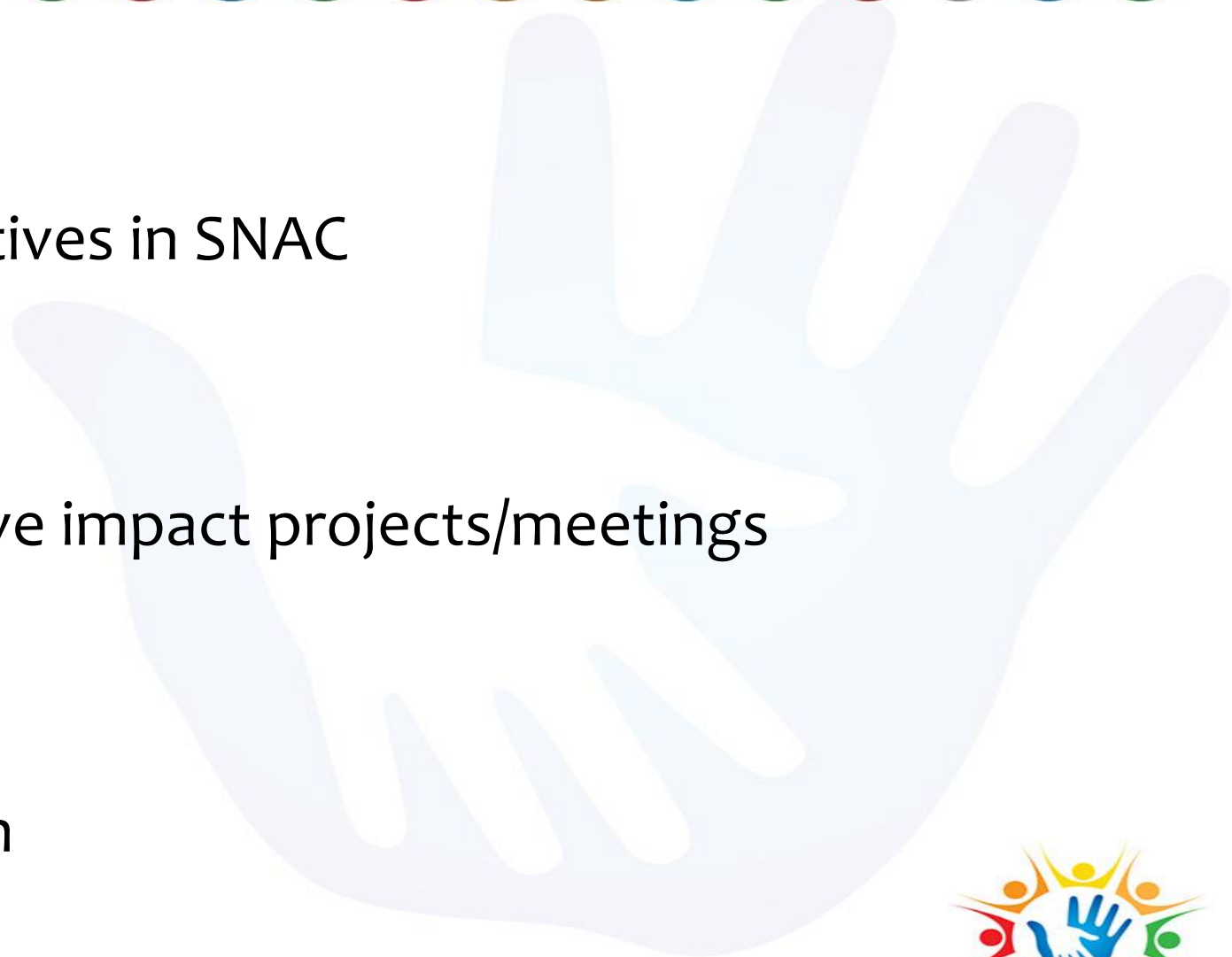
- Reverse Job Fairs
 - Possible launch of a PBC BLN
- Expand Project SEARCH site industries
 - Collaborate with Career Source to obtain industry certifications
- 2nd Supportive Housing Solutions Summit being planned
 - Commissioning a Special Needs Supportive Housing Needs Assessment
- 2 trainers selected to become Master REST respite train the trainer
- Virtual Hub expected for launch in October in partnership with 211
- SNAC Community Inclusion Awards Luncheon





Challenges

- Increase Diversity of Perspectives in SNAC
 - Parents
 - Self-Advocates
 - Providers
- Participation in other collective impact projects/meetings
 - ESE Advisory Council
 - Birth to 22
- Strong Taskforce Leadership
- Communication and Outreach
- Quantifying Impact



Palm Beach County



Contacts

Sharon Alexander, M.H.Sc., ITDS,
SNAC Founder & Chief Strategist,
sharon@eunicorn.org

Tony Beall,
SNAC Facilitator
tony@all4civicengagement.org

Ivonne Rodriguez
Unicorn Program Operations Coordinator
Ivonne@eunicorn.org

**Follow and like us
on**



<https://www.facebook.com/pbcsnac/>



Palm Beach County

Special Needs Advisory Coalition